

Cable Chain Instructions

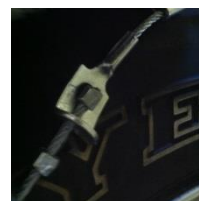
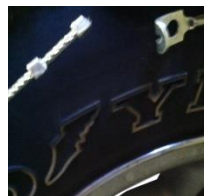
1. Uncoil and lay chains out flat, removing tangles. Drape one chain over each drive wheel. The Snap-Lock should be forward of the wheel. Make sure the hook ends are facing out or tire damage may result.



2. Tuck first or last cross chain under tire. Move car until second cross chain has passed under tire.



3. Hook the Snap-Lock fastener on the inside of the tire



4. Hook the Snap-Lock fastener on the outside. (Refer to Step 3)



5. If position between inside and outside fastener varies by more than one nubbin or cross members are not aligned; correct by returning to Step 3.

6. Cable chains should be installed as tight as possible by hand. Chain Tighteners can assist in this, but not all cable chain models require their use.



(Once installed drive 1/4 mile and retighten if needed.)