

Installation Steps:

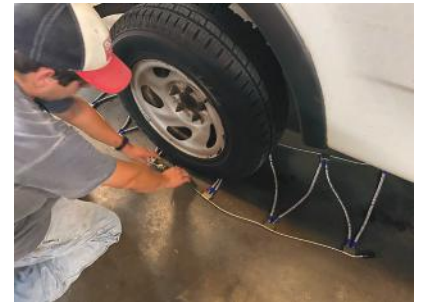
- 1** Park your vehicle on level ground and make sure that parking brake is set. Cables are to be installed on the drive axle.



- 2** Lay the cables on the ground with the smooth side of the cross-member hooks (stamped "Tire Side") facing upward.



- 3** Move the cables in a sweeping motion under the vehicle so that they are on the back side of the tire.



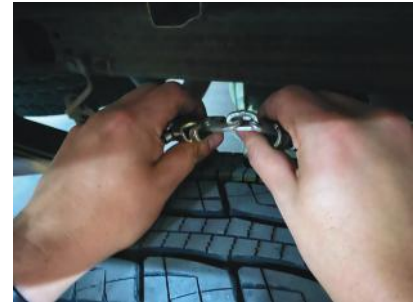
- 4** Reach around to the back side of the tire with both arms; grabbing the ends of the split side cable. Pull both ends to the top of the tire so that the fasteners can be seen and handled easily.



Installation Steps:

5

Fasten them by connecting the quick hook to the chain link.



6

Center the cable chains on the tire so that each side cable extends an equal distance down the side walls of the tire. At the top of the front side of the tire, take the nub end of the outside cable and connect it through the keyhole fastener.



7

Grab the outer cable with both hands and pull it towards you to removing as much slack as possible.



8

Take the nub end of the lower outside cable and connect it through the keyhole fastener.



Installation Steps:

9 Attach the rubber adjuster to each of the six sections on the outer side cable to remove any additional slack. To make this process easier, connect the first hook at the 1 o'clock position, the next directly opposite at the 7 o'clock position, and so forth.



10 Now, enjoy your new tire chains!

