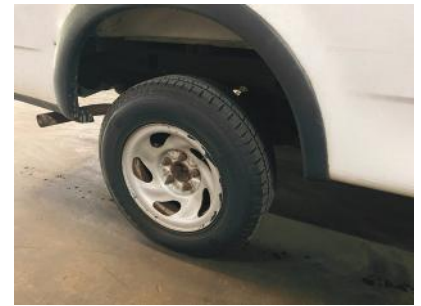


Installation Steps:

- 1** Park your vehicle on level ground and make sure that parking brake is set. Cables are to be installed on the drive axle.



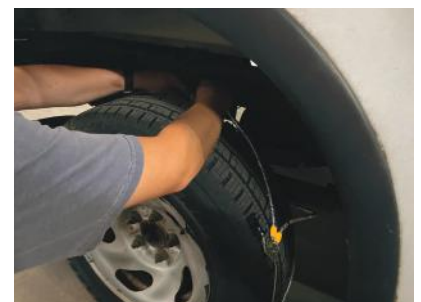
- 2** Lay the cables on the ground with the smooth side of the cross-member hooks (stamped "Tire Side") facing upward.



- 3** Move the cables in a sweeping motion under the vehicle so that they are on the back side of the tire.

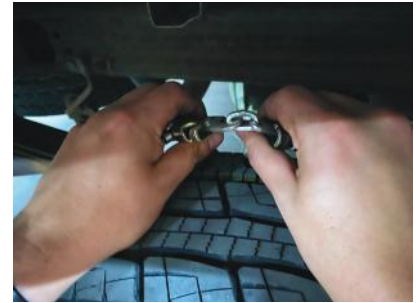


- 4** Reach around to the back side of the tire with both arms; grabbing the ends of the split side cable. Pull both ends to the top of the tire so that the fasteners can be seen and handled easily.

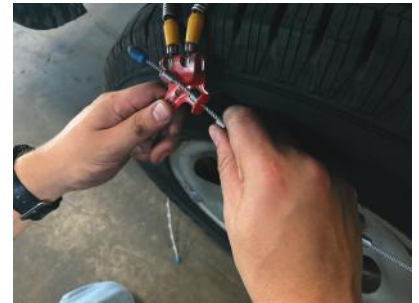


Installation Steps:

5 Fasten them by connecting the quick hook to the chain link.



6 Center the cable chains on the tire so that each side cable extends an equal distance down the side walls of the tire. At the top of the front side of the tire, take the nub end of the outside cable and connect it through the keyhole fastener.



7 Grab the outer cable with both hands and pull it towards you to removing as much slack as possible.



8 Take the nub end of the lower outside cable and connect it through the keyhole fastener.



Installation Steps:

9 Drive the vehicle 5-10 feet. Retighten both the top and the bottom fastener as evenly as possible to remove any additional slack.



10 Secure nub ends of outer side cable with the blue spiral plastic using a turning motion.



11 Enjoy your tire cables and tighten as needed.

